

Watershed Report Card

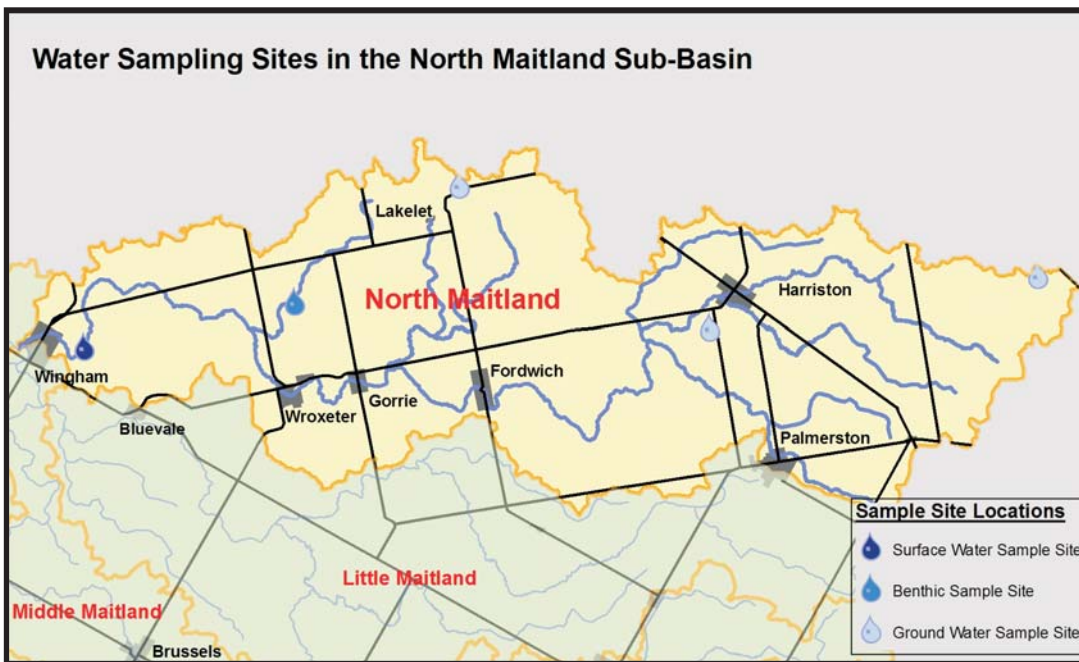


North Maitland River Sub-Basin

This report describes the conditions of the river and forests in the North Maitland River watershed. It is one component of the Maitland Valley Conservation Authority's (MVCA) overall watershed report card that assesses surface and groundwater quality and forest conditions across the Maitland valley. The North Maitland River is one of seven major sub-basins that comprise the Maitland watershed.



WATER QUALITY B
FOREST CONDITIONS C
 Basin Ranking **3 out of 7**



Watershed Description

The North Maitland River sub-basin features a rolling landscape with more forest cover than is found in the southern section of the Maitland watershed. The rolling topography of the area means that a significant amount of marginal land is found in this sub-basin.

The Blind Lake Bog at the north edge of the Township of Howick is a significant headwaters area for the North Maitland River. The area consists of 110 ha of bog, swamp and upland forest on kame moraine. It features an extensive open bog (30 ha) floating and filling in around a small lake. A narrow fringe of wet coniferous and mixed forest separates the open bog from adjacent farmland.

Surface Water Quality Indicators

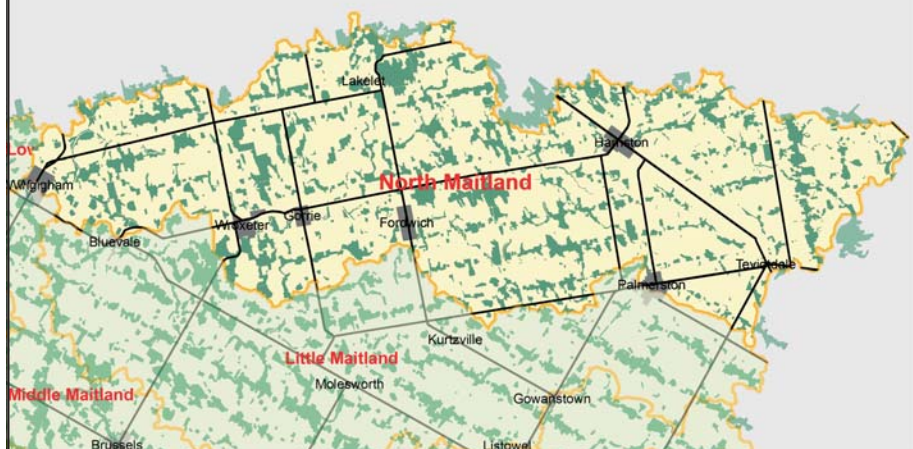
Indicator	Result	Grade	Overall MVCA	Overall MVCA
Phosphorus	.022 mg/L	A	.0317 mg/L	B
Nitrate	4.93 mg/L	B	5.76 mg/L	B
Benthics	4.725	A	5.218	B
E. coli	124.02 cfu/100ml	C	133.1 cfu/100ml	C

Groundwater summary results for the watershed are included in the overall MVCA report card.

The North Maitland River sub-basin encompasses the communities of Harriston, Fordwich, Lakelet, Gorrie and Wroxeter. The MVCA maintains a dam at the mill pond in Gorrie. It is not a flood control structure. There is also a small recreational dam in Wroxeter that is maintained by the community.

The North Maitland River meets the Middle Maitland River in Wingham.

Forest Cover in the North Maitland Sub-Basin



Forest Condition Indicators

Indicator	Result	Grade	Overall MVCA	Overall MVCA
Forest Cover	19.53 %	B	16.72 %	C
Forest Interior	4.1 %	C	3.06 %	D
Marginal Land in Production	33.68 %	C	18.39 %	A

Sub-basins are Unique

There are several sub-basin characteristics that have an impact on the health of a given area. These include:

- geology and landform - permeability of the soil, slope, geology below the soil, elevation
- drainage modifications
- land use and land management - activities occurring on the land
- sensitive areas - areas with highly erodible soils, steep slopes, high water tables are more likely to contribute sediments and nutrients to watercourses

There are significant differences between the sub-basins that make up the Maitland watershed. The unique nature of each sub-basin means that comparing report card results is not particularly useful. Instead the focus of the report card process is on monitoring trends over time to determine if conditions within a sub-basin are improving.



Improving Watershed Health

Suggested actions to improve the health of the North Maitland watershed:

- Create more natural infrastructure such as forested areas, buffer strips, windbreaks and wetlands to help protect the landscape from the extremes of heat, wind and runoff.
- Although the score for forest cover in the North Maitland sub-basin is a B the forest interior score was only a C. Expansion of woodlots will help improve this score as well as providing much needed wildlife habitat.
- The retirement of marginal land to trees and shrubs or permanent pasture will help to protect water and soil resources in the sub-basin.
- Protect existing forest cover and wetlands.
- Increase residue cover and organic matter on fields.
- Ensure proper storage and applications of manure, fertilizers and pesticides.

More information on activities to improve watershed health are available on the My Land, Our Water website (<http://myland.mvca.on.ca>)



1093 Marietta Street
 Box 127 Wroxeter, ON N0G 2X0
 Fax: 519-335-3516
 Phone: 519-335-3557
 Email: maitland@mvca.on.ca

www.mvca.on.ca